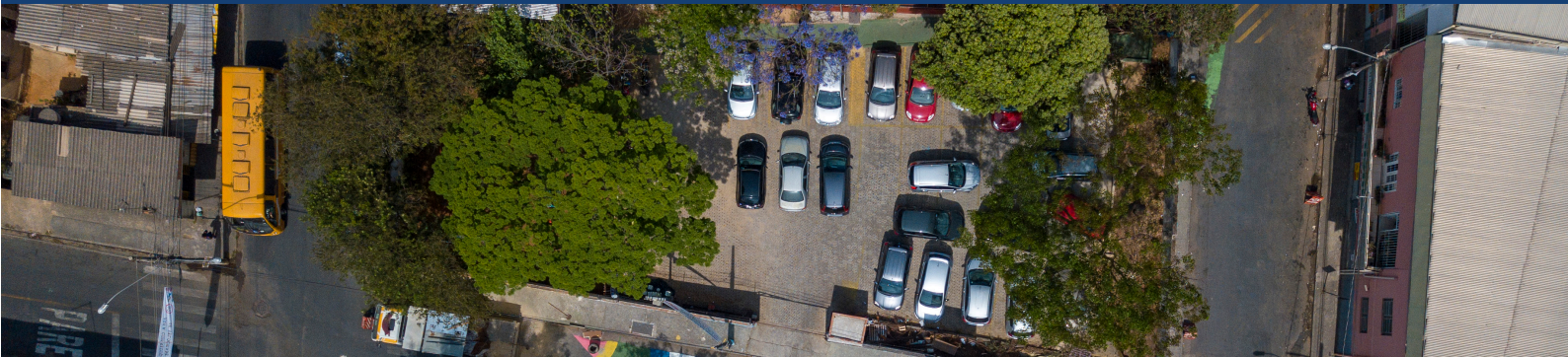




Belo Horizonte

BRAZIL

Country Profile



Brazil

Brazil's Nationally Determined Contribution target is 37% and 43% emission reduction below 2005 levels by 2025 and 2030. Belo Horizonte is the capital of the state of Minas Gerais and located in the southeastern region of Brazil. It is the third-largest metropolitan area in the country and has a population of over 2.4 million, with 5.7 million in the official Metropolitan Area (IBGE, 2014). Considering the rather moderate ambition level of Brazil's NDC, local action in cities play a crucial role for climate change mitigation. Belo Horizonte is one example of an active mid-sized city committed to sustainable development.

Transport

Car and motorcycle ownership in Belo Horizonte has increased significantly in recent years as a side effect of growing welfare levels. Accordingly, the modal share in Belo Horizonte suffered significant changes in the last 17 years: The share of trips by private motor vehicles increased from 20,7% to 36,6% while public transport trips reduced from 44,6% to 28,1%. As the first city in Brazil, Belo Horizonte developed a Sustainable Urban Mobility Plan, called PlanMob-BH, in 2013. The plan consists of elements such as a integrated public transport network composed of metro lines and a bus rapid transit (BRT) system with exclusive bus corridors; a bikeway network with the installation of protected bike lanes and a public bicycle sharing system; and a pedestrian facilities network. The BRT system was expected to cut travel times significantly compared to the previous bus system and to provide a safe and comfortable inner city transport means (ITDP, 2014).

Energy

Belo Horizonte conducted a greenhouse gas inventory in 2009 to create a Greenhouse Gas Reduction plan, developing a Sustainable Buildings Certification Programme, which includes the change to efficient sodium vapour lighting and LED lights in all public lighting. Additionally, renewable energy sources from landfills and wastewater treatment are being explored.

Waste management

The greater Belo Horizonte Metropolitan Region (BHMR) with over 5 million inhabitants generates over 7,000 tons of solid waste every day, approximately 50% is going directly to landfills. Waste management in the city is under the jurisdiction of the Municipal Department of Urban Cleaning (Superintendência de Limpeza Urbana (SLU)). The goal is to not only reduce waste, but also reducing costs for the public sector and highlighting the importance of social participation - for example involving waste picker cooperatives in the process.