



# Urban Pathways

Governance and coalition building

Oliver Lah

IMPLEMENTING  
THE **NEW URBAN**  
**AGENDA**

Supported by:



Federal Ministry for the  
Environment, Nature Conservation,  
Building and Nuclear Safety

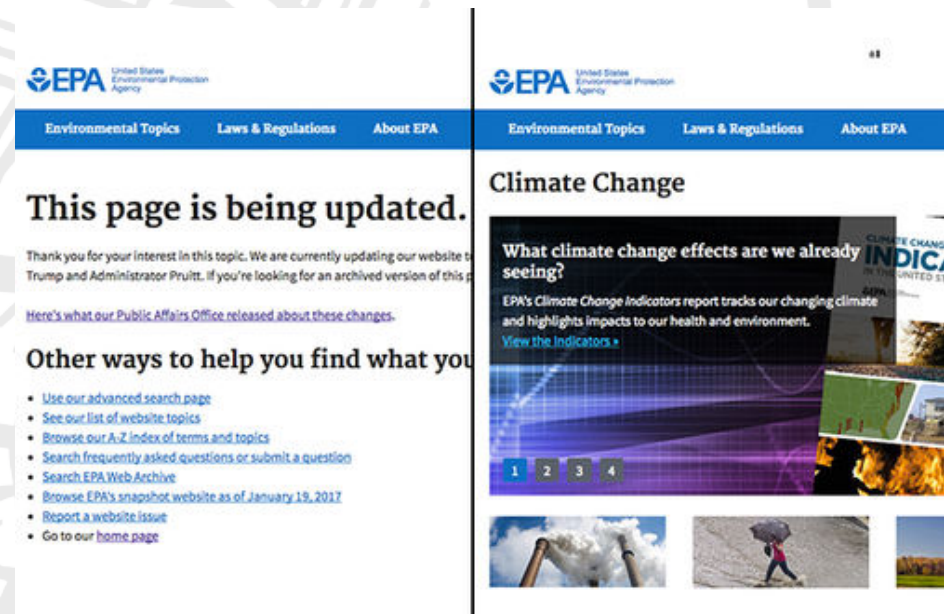
based on a decision of the German Bundestag



# Urban Pathways

Coalitions for the implementation of long-term climate change actions

- Consensus required on the need for policy intervention and a strategic, coherent, and stable operating environment
- Strong political commitment to appear on the policy agenda and resilient institutions to remain in place as they rely on investments that are only cost-effective over the medium to long-term



IMPLEMENTING  
THE **NEW URBAN**  
**AGENDA**

Supported by:



Federal Ministry for the  
Environment, Nature Conservation,  
Building and Nuclear Safety

based on a decision of the German Bundestag



# Urban Pathways

Coalitions for the implementation of long-term climate change actions

- Linking and packaging policies is vital to generate synergies and co-benefits between measures, including linking GHG reduction goals with other sustainable development goals
- An integrated policy approach that creates consensus and coalitions among diverse stakeholders and interests can help to overcome implementation barriers, minimize rebound effects, and motivate people, businesses, and communities



IMPLEMENTING  
THE **NEW URBAN**  
**AGENDA**

Supported by:



Federal Ministry for the  
Environment, Nature Conservation,  
Building and Nuclear Safety

based on a decision of the German Bundestag





# Urban Pathways

Governance factors of success for sustainable development and climate change policies

- Political continuity and a societal consensus, which enable the take-up of policies and ensure stability,
- An integrated policy approach that combines various measures to provide a basis for political coalitions, and
- Political continuity and policy integrations efforts are affected by the institutional context and the policy operating environment.





# Urban Pathways

## Policy continuity and consensus

- Interactions between different levels of government consensus on climate change policy, may vary between key political and societal actors
- Shared methods and values can help mitigating political volatility
- Epistemic communities can play an important role to generate consensus on major policy issues

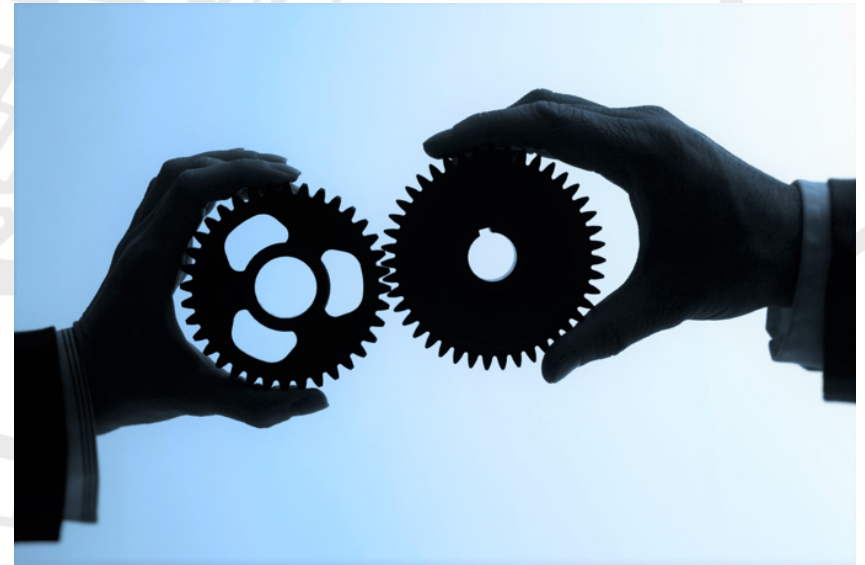




# Urban Pathways

## Policy integration and coalition building

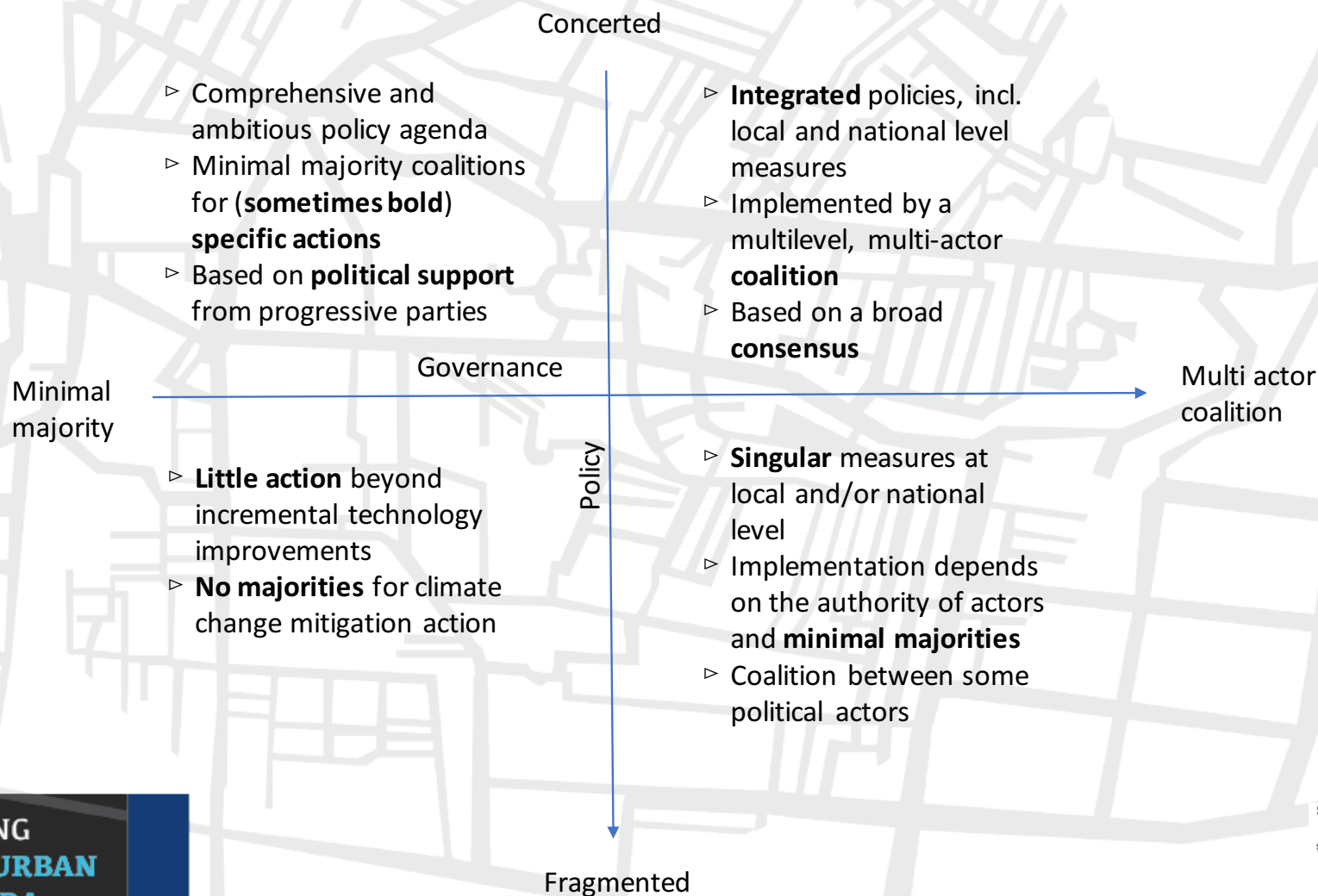
- Combination of policy interventions can create the basis for coalitions for long-term climate action strategies
- Synergies between socio-economic and political objectives can affect the ability to overcome opposition
- Involvement of potential veto players and the incorporation of their policy objectives





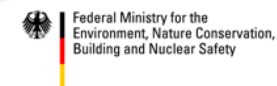
# Urban Pathways

## Governance Framework



IMPLEMENTING  
THE **NEW URBAN**  
**AGENDA**

Supported by:



based on a decision of the German Bundestag





# Urban Pathways

Please identify:

- The institutions that have the legal power to stop your project
- The stakeholders that should be involved
- The political risks (e.g. upcoming elections)

IMPLEMENTING  
THE **NEW URBAN**  
**AGENDA**

[www.urban-pathways.org](http://www.urban-pathways.org)

Supported by:



Federal Ministry for the  
Environment, Nature Conservation,  
Building and Nuclear Safety

based on a decision of the German Bundestag